



# Weldex & Liebherr HS855HD Crawler Crane

When it comes to lifting, one name stands out. Weldex is the UK's

both throughout the UK and internationally. Established in 1979 by the McGilvray family to provide crane

player with quality state-of-the-art equipment and expert staff providing a trusted solution for the most

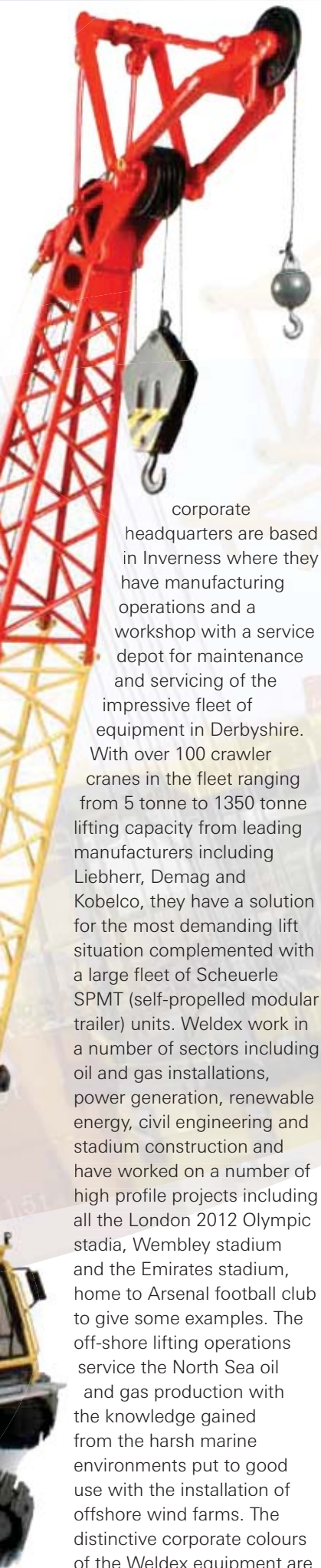


Above: HS855HD at rest at Peterhead harbour, taken by Mervyn Walker.

leading crawler crane hire company, specialising in hire and contract lift projects

hire throughout Scotland, the company has grown to become an international

demanding lifting requirements, both on land and offshore. The



corporate headquarters are based in Inverness where they have manufacturing operations and a workshop with a service depot for maintenance and servicing of the impressive fleet of equipment in Derbyshire. With over 100 crawler cranes in the fleet ranging from 5 tonne to 1350 tonne lifting capacity from leading manufacturers including Liebherr, Demag and Kobelco, they have a solution for the most demanding lift situation complemented with a large fleet of Scheuerle SPMT (self-propelled modular trailer) units. Weldex work in a number of sectors including oil and gas installations, power generation, renewable energy, civil engineering and stadium construction and have worked on a number of high profile projects including all the London 2012 Olympic stadia, Wembley stadium and the Emirates stadium, home to Arsenal football club to give some examples. The off-shore lifting operations service the North Sea oil and gas production with the knowledge gained from the harsh marine environments put to good use with the installation of offshore wind farms. The distinctive corporate colours of the Weldex equipment are



**Above:** Liebherr HS855HD showing its versatility placing rock armour at Peterhead harbour by Mervyn Walker.

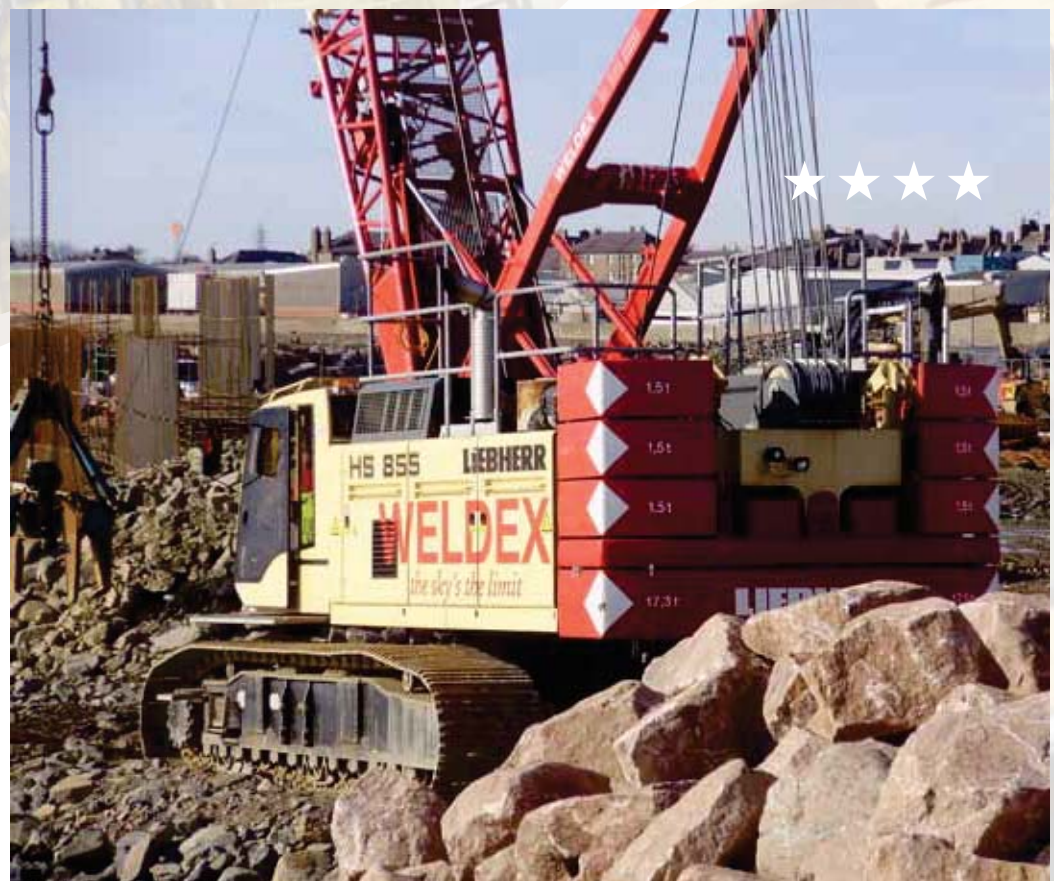
instantly recognisable and for the first time, a 1:50th scale model of the Liebherr HS855HD crawler crane has been produced by NZG in the Weldex decoration.

### **Liebherr HS855HD Crawler Crane**

The versatile Liebherr HS855 duty cycle crane can perform a number of different tasks from lifting to material handling, demolition, soil

compaction and foundation applications with diaphragm wall grabs or casing oscillators. The maintenance free Liebherr free-fall winches with integrated drive and disc brakes are powerful and robust with electro-hydraulic control systems allowing smooth and precise control whilst the removable track frames and ballast systems allow easy transport to

the work site. The crane is powered by a 600hp diesel engine with an operational weight of 84.4 ton and a maximum lift capacity of 90 tonne. The main body of the model features opening side doors which give access to the winding mechanisms fitted to the winches. The two main lift winches are actually geared with the supplied winding keys being needed to release the drum locks before





**Above:** The model can be authentically broken down for transportation with different parts allowing several alternative configurations, including dragline.

turning to wind the rope. This is a very nice piece of



down to reduce the height for transport which is another nice touch. The cab has large glazed windows allowing the detailed interior to be seen, complete with contoured seat, joystick controls and control console. The cab tilts up to about 30 degrees and has a roof window protection screen with integrated work lights. A rear view mirror and windscreen wiper have been added with silver painted walkways located along both

with the Liebherr name cast into the final drive housings. The undercarriage H-section has cast slots on one end which would allow a casing oscillator attachment to be connected while the track



transport weight. This is another great touch on the model and four jacks are connected to the undercarriage allowing it to be authentically posed with the track frames removed. The rear counterweight system has been accurately captured and is fully functional with the ability to connect the four lift chains to the main ballast section. The hydraulic pistons can be raised, lifting the ballast into position before it is secured with a pin. There are ten smaller ballast stones that can be used (up to five each side) and they are held steady with the use of metal pins, of which three sizes are supplied allowing three, four or the full complement of five ballast stones per side. The A-Frame has metal pulleys which line up with the pulleys at the rear of the upper structure and this is relatively easy to reeve from the rear-most winch. There are different pulleys supplied with the model to allow the boom head to be accurately configured depending on the chosen setup as a lift crane or, with the included drag bucket as a dragline. The pennant lines have been made from actual metal rope with crimped loops at each end that connect with the small metal connecting pieces which really does add to the realistic look of the model. NZG have done a fantastic job with the decoration, accurately recreating the graphics and colours of the full sized crane in service with Weldex.



engineering on the model and the winches work will once pressure is applied. The body casting is very crisp with lots of detail including diamond plate floor panels, access ladder at the rear and the exhaust stack can be folded

sides of the upper structure and around the cab frame. The tracks are tensioned with individually linked metal track pads, complete with triple grouser surface detailing with the track frames having small rollers along the bottom edge

frames can be extended to provide a larger footprint and the four square panels on the front surfaces can be removed to access the fixing screws, allowing the track frames to be removed from the undercarriage to reduce

